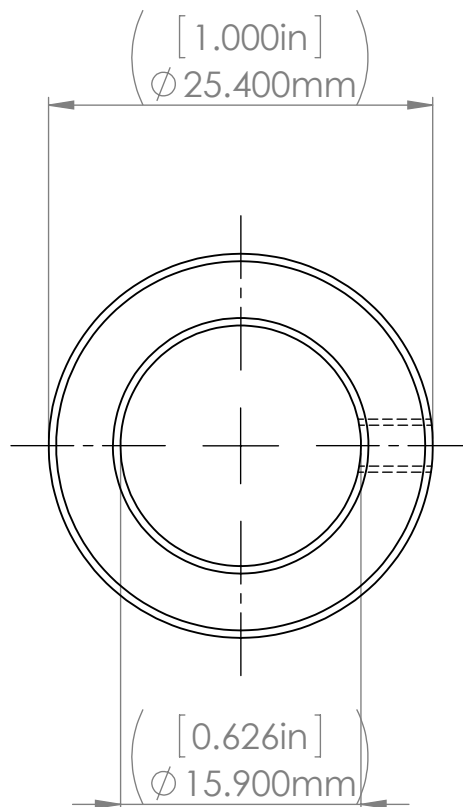


Tapped hole for
#6-32 set screws



VIEW:

TOP, SIDE

NOTES:

Small shaft collar to attach below the slip ring to help support and make sure it doesn't shift down. Slightly smaller OD than available from McMaster, but needed to avoid interference with wires.

DRAWN BY

NAME

DATE



Aluminum

PART:

Slip Ring stopper